

Standard for the Development and Expansion of Power Lines and Substations within Identified Geographical Areas

Revision 2

June 2022



Prepared for: Department of Forestry, Fisheries & the Environment, Department of Energy, Department of Public Enterprises, iGas, Eskom and Transnet

Prepared by: Council for Scientific and Industrial Research (CSIR) and South African National Biodiversity Institute (SANBI)



Standard for the Development and Expansion of Power Lines and Substations within Identified Geographical Areas

Prepared for:

Department of Forestry, Fisheries and the Environment
Department of Mineral Resources and Energy
Department of Public Enterprises
iGas
Eskom
Transnet

Contact Person:

Dr. Dee Fischer
Chief Director: IEMS
Department of Forestry, Fisheries and the Environment
Tel: +27 12 399 8843
Fax: +27 12 399 9260
E-mail: dfischer@dffe.gov.za

Prepared by:

CSIR
PO Box 320
Stellenbosch
South Africa
7599

Authors:

Paul Lochner
Annick Walsdorff¹
Rohaida Abed
Luanita Snyman-van der Walt
Fahiema Daniels²
Tsamaelo Malebu

Council for Scientific and Industrial Research
Council for Scientific and Industrial Research
Council for Scientific and Industrial Research
Council for Scientific and Industrial Research
South African National Biodiversity Institute
South African National Biodiversity Institute

¹ This project team member has resigned from CSIR, however served as Project Leader from April 2017 to October 2019.

² This project team member resigned from SANBI at end October 2020.

Drawing on specialist studies conducted by the following specialists as part of the Strategic Environmental Assessment for the Expansion of Electricity Grid Infrastructure Corridors in South Africa³:

Chris van Rooyen	Chris Van Rooyen Consulting
Albert Froneman	Chris Van Rooyen Consulting
Surina Laurie ⁴	Council for Scientific and Industrial Research
Dr. David Le Maitre	Council for Scientific and Industrial Research
Dr. Graham von Maltitz	Council for Scientific and Industrial Research
Simon Bundy	SDP Ecological and Environmental Services
Alex Whitehead	SDP Ecological and Environmental Services
Lizande Kellerman	Council for Scientific and Industrial Research
Simon Todd	3 Foxes Biodiversity Solutions
Dr. Derek Berliner	Eco-Logic Consulting
Dr. Lara Van Niekerk	Council for Scientific and Industrial Research
Steven Weerts	Council for Scientific and Industrial Research
Gary de Winnaar	GroundTruth
Dr. Vere Ross-Gillespie	GroundTruth
Johann Lanz	Private, Independent Consultant

Recommended citation:

Department of Forestry, Fisheries and the Environment, 2022. Standard for the Development and Expansion of Power Lines and Substations within Identified Geographical Areas Revision 2. Prepared by the CSIR and SANBI for the Strategic Environmental Assessment for the Expansion of Electricity Grid Infrastructure Corridors in South Africa.

³ Department of Environment, Forestry and Fisheries, 2019. Strategic Environmental Assessment for the Expansion of Electricity Grid Infrastructure Corridors in South Africa. CSIR Report Number: CSIR/SPLA/EMS/ER/2019/0076/B. ISBN Number: ISBN 978-0-7988-5648-5. Stellenbosch and Durban.

⁴ Note that this Author was under the employ of the Council for Scientific and Industrial Research (CSIR) during the completion of the relevant SEA Report Chapters; however has subsequently resigned.

CONTENTS



CHAPTER 1. CONTEXT, PURPOSE AND APPLICATION	5
1.1 Context of the Standard.....	5
1.2 Purpose of the Standard	7
1.3 Scope of this Standard	7
1.4 Exclusions.....	8
1.5 Applicability of the Generic Environmental Management Programme	8
1.6 General.....	9
CHAPTER 2. PROCEDURAL REQUIREMENTS.....	10
CHAPTER 3. GENERAL ENVIRONMENTAL PRINCIPLES	13
CHAPTER 4. COMPLIANCE – AUTHORITY INSPECTIONS.....	14
CHAPTER 5. OFFENCES	14
CHAPTER 6. CONTACT DETAILS	14
CHAPTER 7. REFERENCES.....	14
APPENDIX A – ENVIRONMENTAL SPECIFICATIONS.....	16
APPENDIX B – FORMAT OF ENVIRONMENTAL SPECIALIST CONFIRMING STATEMENTS.....	19
APPENDIX C - GENERIC PROCESS FLOW DIAGRAM OF THE PROCEDURAL REQUIREMENTS	24
APPENDIX D - SPECIALIST DECLARATION TEMPLATE.....	25
APPENDIX E - ENVIRONMENTAL ASSESSMENT PRACTITIONER DECLARATION TEMPLATE	26
APPENDIX F – REGISTRATION FORM	28

FIGURES

Figure 1: Five Gazetted EGI Corridors assessed as part of the 2016 EGI SEA and two Expanded EGI Corridors assessed as part of the 2019 EGI Expansion SEA.

7

ABBREVIATIONS

BID	Background Information Document
CBO	Community-Based Organisation
CR	Critically Endangered
EAP	Environmental Assessment Practitioner
EIA	Environmental Impact Assessment
ECO	Environmental Control Officer
EGI	Electricity Grid Infrastructure
EMPr	Environmental Management Programme
EN	Endangered
EWT	Endangered Wildlife Trust
GIS	Geographic Information Systems
HIA	Heritage Impact Assessment
I&APs	Interested and Affected Parties
NEMA	National Environmental Management Act, 1998 (Act No. 107 of 1998), as amended
NEM:BA	National Environmental Management: Biodiversity Act, 2004 (Act No. 10 of 2004), as amended
NGO	Non-Governmental Organisation
OEC	Obstacle Evaluation Committee
SABAP	South African Bird Atlas Project
SACAA	South African Civil Aviation Authority
SACNASP	South African Council for Natural Scientific Professions
SAHRA	South African Heritage Resources Agency
SEA	Strategic Environmental Assessment
VU	Vulnerable

CHAPTER 1. CONTEXT, PURPOSE AND APPLICATION

1.1 Context of the Standard

The National Environmental Management Act, 1998 (Act No. 107 of 1998) (NEMA) promotes the integrated environmental management of activities that may have a significant impact (positive or negative) on the environment. Section 24(1) of the NEMA states that *“in order to give effect to the general objectives of integrated environmental management laid down in this Chapter, the potential consequences for or impacts on the environment of listed activities or specified activities must be considered, investigated, assessed and reported on to the competent authority or Minister responsible for Mineral Resources, as the case may be, except in respect of those activities that may commence without having to obtain environmental authorisation in terms of this Act.”*

Section 24(2)(c) - (e) provides the ability of the Minister, or MEC in concurrence with the Minister to identify activities and geographical areas within which activities may be excluded from the requirement to obtain environmental authorisation and section 24(2)(d) provides the additional ability to link such exclusions with compliance with prescribed norms or standards. This Standard, entitled “Standard for the Development and Expansion of Power lines and Substations within Identified Geographical Areas” (the Standard) has been adopted in terms of section 24(10)(a) of NEMA to allow for the exclusion, in terms of section 24(2)(d) of NEMA, of activities which relate to the development and expansion of electricity transmission and distribution infrastructure as identified in Listing Notices 1 and 2 of the Environmental Impact Assessment (EIA) Regulations, promulgated under section 24(5) of NEMA as well as any listed or specified activities necessary for the realisation of such infrastructure which includes substations, as described in the scope of this Standard.

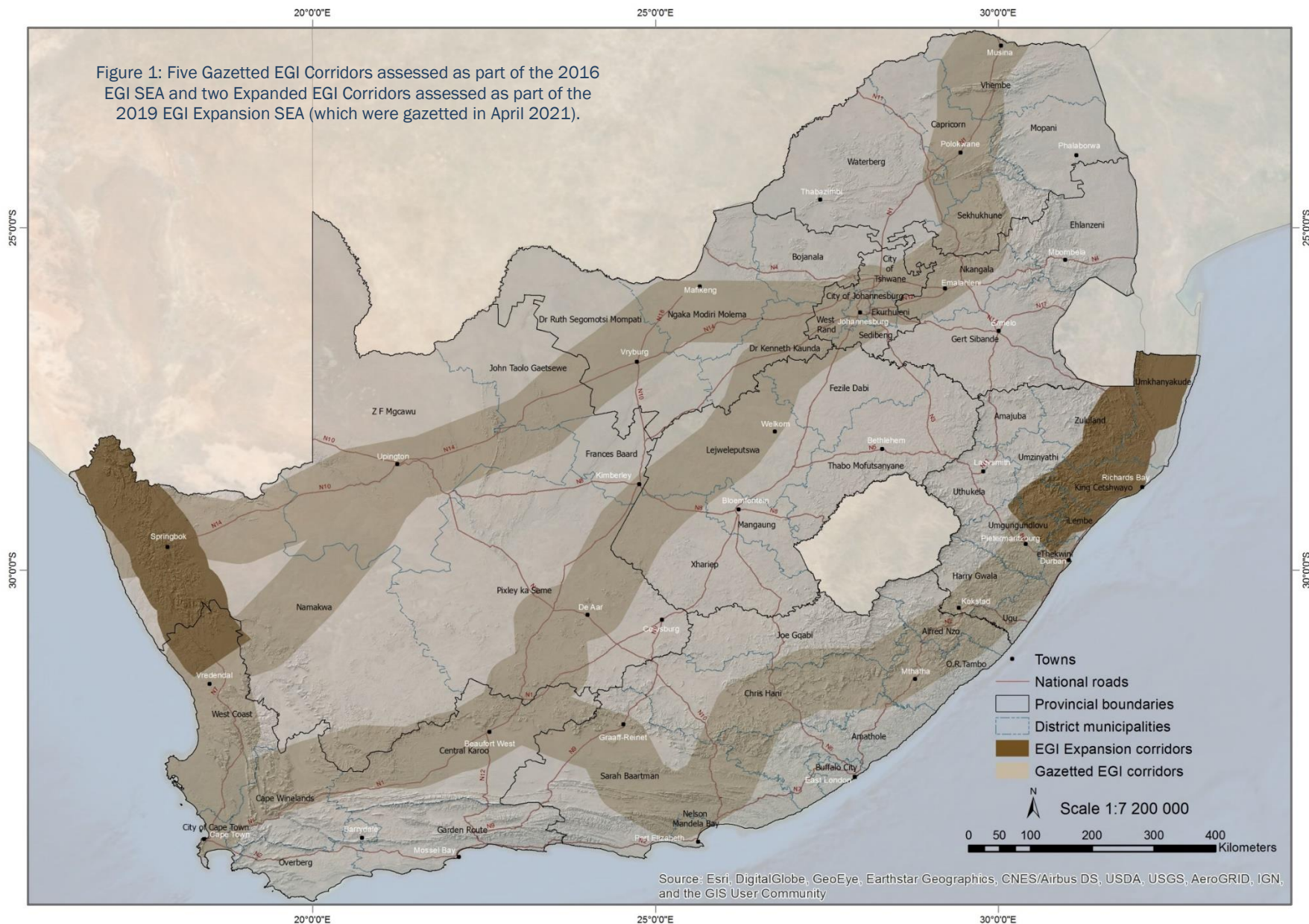
This Standard has been developed based on two Strategic Environmental Assessment (SEA) processes undertaken for the development of Electricity Grid Infrastructure (EGI) in South Africa as listed below:

- SEA completed in 2016 for the identification and assessment of five (5) EGI Corridors; and
- SEA initiated in 2017 and completed in 2019 for the identification and assessment of two (2) expanded EGI Corridors.

The SEA processes identified geographical areas which are of strategic importance for the rollout of electricity transmission and distribution infrastructure in terms of Strategic Integrated Project 10: Electricity Transmission and Distribution for all. These geographical areas consist of seven (7) strategic transmission corridors for the development of transmission and distribution infrastructure (Figure 1) that have been pre-assessed for environmental sensitivities.

- 2016 EGI SEA:
 - Central Corridor;
 - Eastern Corridor;
 - International Corridor;
 - Northern Corridor; and
 - Western Corridor.
- 2019 Expanded EGI SEA:
 - Expanded Eastern Corridor; and
 - Expanded Western Corridor.

The study areas of the SEAs (i.e. the corridors) were investigated by specialists through desktop geographic information system (GIS) analysis. These strategic transmission corridors have been gazetted as identified geographical areas in Government Notice No. 113 published under Government Gazette No. 41445 of 16 February 2018 and Government Notice No. 1637 published under Government Gazette No. 45690 of 24 December 2021.



1.2 Purpose of the Standard

The purpose of this Standard is to provide rules, which must be complied with, ensuring:

- compliance with the principles contained in section 2 of NEMA and the duty of care, in terms of section 28(1) of NEMA; and
- sustainable development within the strategic transmission corridors.

This Standard has been prepared to allow a proponent to achieve planning, routing, siting and remediation objectives that will ensure the acceptability of the impacts of the development of EGI including substations on the environment, independently from the need for an assessment by the competent authority. These planning, routing, siting and remediation objectives were determined through the development of two SEAs undertaken to identify geographical areas best suited for the development of EGI infrastructure and its supporting infrastructure, including substations as identified in paragraph 1.1 above.

The submission of the registration form provided in Appendix F, the signing of the declaration by the proponent to commit to implementing the Standard provided in Appendix 9 and to comply with the Generic Environmental Management Programmes identified in paragraph 1.5 and provided in Appendix 10, will enable the exclusion of the development of EGI infrastructure and substations in the identified strategic transmission corridors from the need to obtain an environmental authorisation from the competent authority, as provided for in section 24(2)(d) of NEMA, for the development of transmission and distribution infrastructure within the Strategic Transmission Corridors as identified in paragraph 1.3.

The Final SEA Reports for the 2016 EGI SEA and 2019 EGI Expansion SEA can be accessed at: <https://gasnetwork.csr.co.za/> and <https://egis.environment.gov.za/>

1.3 Scope of this Standard

The provisions of this Standard are applicable:

- within the strategic transmission corridors as identified in Government Notice No. 113 in Government Gazette No. 41445 of 16 February 2018 and Government Notice No. 1637 in Government Gazette No. 45690 of 24 December 2021;
- in areas identified by the national web based screening tool⁵ (screening tool) as being of medium or low environmental sensitivity and confirmed to be such by the EAP or the relevant specialist for the identified environmental theme; and
- for the following activities, including the associated activities necessary for the realisation of the infrastructure, as identified in the EIA Regulations:
 - Listing Notice 1: Activity 11⁶ and 47; and
 - Listing Notice 2: Activity 9;

In addition to the activities identified above, the following activities and infrastructure are required for the realisation of transmission and/ or distribution power lines and/ or substations which could trigger additional listed or specified activities. Should any of the associated activities undertaken trigger an identified activity, it is regarded as being included in this Standard;

⁵ The screening tool is an online application that includes a database of currently available spatial data used to assist Environmental Assessment Practitioners (EAPs) identify and consider environmental sensitivities in an area where development is being proposed. The screening tool can be accessed at: <https://screening.environment.gov.za/screeningtool>.

⁶ Activity 11 and 47 of Environmental Impact Assessment Regulations Listing Notice 1 of 2014 is inclusive of substation developments

- Construction camp site and laydown area establishment;
- Servitude gate installation to facilitate access to the servitude;
- Vegetation clearing to facilitate access, construction and the safe operation of the infrastructure;
- Establishing of access roads on the servitude where required;
- Preparation for construction right-of-way and ground preparation;
- Pegging of tower positions for construction;
- Transportation of equipment, materials and personnel to site and stores;
- Installation of foundations for the towers;
- Tower assembly and erection;
- Conductor stringing and regulation;
- Transfer of the line from the Contractor for commissioning;
- Rehabilitation of disturbed areas;
- Final inspection of the line, commissioning and transfer to the Grid Line and Servitude Manager for operation;
- Transfer of the servitude by the Grid Environmental Manager; and
- Operation and maintenance of the infrastructure.

Transmission and distribution power lines are located within a registered servitude and maintenance of this servitude is required to retain access and reduce the risk of obstruction and lightning strikes to the power line infrastructure. Servitude widths vary from 15 m – 80 m depending on the size of the power line and an access road of 4 m – 6 m in width is required. The servitude agreement with the landowner will specify the requirements of the power line operator. Maintenance activities will include cleaning, inspections, and repair (as required).

1.4 Exclusions

This Standard and exclusions do not apply in the following instances:

- Where any part of the infrastructure occurs on an area for which the environmental sensitivity for a relevant environmental theme is identified as being very high or high by the screening tool and confirmed to be such by the EAP or the relevant specialist for the identified environmental theme;
- Where the site verification for a specific theme identifies that the low or medium sensitivity rating of the screening tool is in fact high or very high; or
- Where the greater part of the proposed infrastructure fall outside of any strategic transmission corridor.

Where this Standard does not apply, either the requirements of the EIA Regulations, or the requirements of Government Notice No. 113 in Government Gazette No. 41445 of 16 February 2018, read with the NEMA EIA Regulations, where relevant, apply to the relevant environmental theme for which the very high or high sensitivity has been identified, in respect of the portion of the development which occurs on the area where the environmental sensitivity is confirmed to be very high or high, or to the entire development where the greater part of the infrastructure falls outside of the strategic transmission corridor.

1.5 Applicability of the Generic Environmental Management Programme

As part of the 2016 EGI SEA, a Generic Environmental Management Programme (EMPr) was compiled for the development and expansion of: (a) overhead electricity transmission and distribution infrastructure; and (b) substation infrastructure for the transmission and distribution of electricity. The two Generic EMPrs were gazetted for implementation in Government Notice No. 435 published under Government Gazette No. 42323 of 22 March 2019. The Generic EMPrs apply within South Africa as a whole, and need to be applied for the development of all overhead and substation electricity transmission and distribution infrastructure (as

contained in the EIA Regulations Listing Notices 1 – 3 published in Government Notices R982⁷, R983⁸, R984⁹ and R985¹⁰). These Generic EMPs consist of the following:

- Part A - Includes definitions, acronyms, roles and responsibilities and documentation and reporting requirements.
- Part B – Section 1: Pre-Approved Generic Template that must be completed by the contractor prior to commencement of construction. This section does not need to be submitted to the competent authority.
- Part B – Section 2: Provision of preliminary infrastructure layout and a declaration that the applicant/holder of the environmental authorisation will comply with the pre-approved Generic EMP template contained in Part B: Section 1 and understands that the impact management outcomes and impact management actions are legally binding.
- Part C – Site Specific Sensitivities and Attributes: If any specific environmental sensitivities or attributes are present on the site which require site specific impact management outcomes and actions that are not included in the pre-approved generic EMP (Part B – Section 1), these specific impact management outcomes and actions must be included in Part C and must be submitted to the competent authority for approval.

For the purpose of this Standard, the Pre-Approved Generic Template of the Generic EMPs (Part B – Section 1) applies. Part C will apply if any specific environmental sensitivities or attributes are identified which the generic pre-approved template does not cover. However, in the case of this Standard being applicable, Part C does not need to be submitted to the competent authority for approval. In this case Part C must be appended to the Pre- Approved Generic Template (Part B – Section 1).

1.6 General

The provisions of the National Appeal Regulations, 2014, as amended, are applicable to decisions taken based on this Standard and an appeal against any registration decision related to this Standard may be lodged.

Compliance with this Standard does not negate the need for the proponent to comply with all other applicable legislation.

⁷ Published under Government Gazette No. 38282 of 4 December 2014, as amended

⁸ Published under Government Gazette No. 38282 of 4 December 2014, as amended

⁹ Published under Government Gazette No. 38282 of 4 December 2014, as amended

¹⁰ Published under Government Gazette No. 38282 of 4 December 2014, as amended

CHAPTER 2. PROCEDURAL REQUIREMENTS

1. The proponent must identify a *preliminary corridor*¹¹ and/or the proposed substation sites using the screening tool and additional relevant spatial datasets where available. The provincial department responsible for the environment and local municipality in the area should be contacted in relation to possible additional fine scale data.
2. The proponent must appoint an independent Environmental Assessment Practitioner (EAP) and must ensure that the EAP fulfils the requirements to register the proposed development in accordance with this Standard.
3. The proponent must ensure that the EAP, as a minimum, follows the public participation process required in Chapter 6 of the EIA Regulations for a linear development during the route determination process, excluding the following requirements which would not be relevant to the Standard:
 - Obtaining written consent from the owner or person in control of the land on which the proposed development is to be undertaken for the powerline development;
 - Timeframes pertaining to comment periods for basic assessment reports, EMP_r, scoping reports, EIA reports, and closure plans;
 - Notification along alternative routes in the form of notice boards; and
 - Giving notice of the process being applied (basic assessment or scoping and environmental impact report).
4. As part of the interested and affected parties¹² (I&APs) the EAP¹³ must ensure that relevant Non-Governmental Organisations (NGOs) and Community-Based Organisations (CBOs) are effectively consulted during the public participation process.

Based on the information provided by the screening tool, additional spatial data and the EAP's professional knowledge, the proponent assisted by the EAP must appoint a specialist team who will assist with the route planning. The proponent must ensure that the EAP prepares a preliminary database of possible stakeholders and interested and affected parties (I&APs) along the *preliminary corridor* and in the vicinity of the substation site, including relevant government departments and relevant non-governmental stakeholders. The proponent assisted by the EAP must then announce the proposed development by making available a Background Information Document (BID) on a publicly accessible website and distributing the BID to stakeholders and I&APs identified on the database.

5. The proponent assisted by the EAP must appoint a specialist team to undertake the site verification of the relevant environmental themes where relevant as well as a walkthrough¹⁴ of areas that need verification in the opinion of the EAP and specialist. Should a particular specialist not be required, the EAP must motivate their exclusion from the team and include this motivation in the BID. It is anticipated that the following specialist expertise will be required:
 - (a) Terrestrial biodiversity and ecology;
 - (b) Aquatic biodiversity and ecology;
 - (c) Avifauna;
 - (d) Heritage;
 - (e) Agriculture/soil scientist; and

¹¹ The *preliminary corridor* is to be wide enough to provide options to avoid environmental and engineering constraints. The width of the Preliminary Corridor shall be determined by the proponent based on best practice.

¹² The purpose of the BID is not to obtain comments within a dedicated comment period but rather to announce the project, and to update the stakeholder database with registered stakeholders.

¹³ There is reference to an environmental assessment practitioner who may work on behalf of the proponent, however the proponent remains responsible for undertaking all legislated tasks.

¹⁴ It is not intended that a walkthrough would be required for the entire footprint, but rather areas that need verification in the expert view of the specialist or EAP

- (f) Visual (not required for a substation).
6. The BID must include as a minimum the following information:
- (a) Purpose of the BID;
 - (b) Legal context;
 - (c) Background and project description;
 - (d) Process and timeline;
 - (e) The screening report generated from the screening tool for the *Preliminary Corridor* and/or proposed substation site;
 - (f) Location of the *Preliminary Corridor* and/or proposed substation site, including a map generated at an appropriate scale that displays the extent of the *Preliminary Corridor* and/or proposed substation as detailed as possible. Where an electronic copy of the BID is distributed, the spatial data of the *Preliminary Corridor* and/or proposed substation site must be made available;
 - (g) Contact details of the EAP; and
 - (h) I&AP registration forms.
7. The proponent must ensure that the EAP and specialists identify through their specialist knowledge and site verifications/walkthrough as necessary, a *proposed route* and/or the substation location/s (where a substation or substations are relevant) within the *preliminary corridor* based on:
- a) consideration and implementation of the mitigation hierarchy¹⁵,
 - b) environmental sensitivity identified using the methodologies or processes as stipulated in Chapter 3 of this Standard, and
 - c) engineering constraints.
8. As the route is being identified, the initial servitude negotiations¹⁶ are to be undertaken to ensure that the route and/or substation location is not fatally flawed in relation to servitude access.
9. The process to identify the *proposed route* and/or substation location and the outcome of the initial servitude negotiations must be documented in an environmental sensitivity report, which must be subjected to a minimum public comment period of 30 days as part of the public participation process identified in paragraph 3 above.
10. The environmental sensitivity report must include, as a minimum, the following information:
- (a) The details and relevant expertise of the EAP and specialists preparing the report;
 - (b) The outcome of the screening exercise¹⁷ undertaken using the screening tool, the expert knowledge of the specialists where necessary, results of the site verification¹⁸, the adoption of the mitigation hierarchy principles and the principles contained in Chapter 3 of this Standard;
 - (c) Location map of the *proposed route* and/or proposed location of the substation at a scale not more than 1:15000 to identify environmental features;
 - (d) Details of the public participation process undertaken;
 - (e) A discussion by the specialists and/or EAP of the process used to confirm that the *proposed route* and/or substation location has applied the principles stipulated in Chapter 3, and the process used to confirm that the site sensitivity of the proposed route and/or substation location is of low or medium environmental sensitivity;

¹⁵ Mitigation hierarchy includes the following steps in the order of decreasing desirability: Avoid, Minimise, Rehabilitate, and Offset.

¹⁶ Initial servitude negotiations do not entail the signing of actual servitude agreements but should indicate proof of the negotiations which can be in the form of a “no objection letter” signed by the landowner indicating that they are aware of the proposed routing and have no objection to the route traversing their property based on the formal signing of a servitude agreement.

¹⁷ The screening exercise would entail the generation of several screening reports and the consideration of various alternative routes to avoid environmental sensitivities and engineering constraints.

¹⁸ The results of the site verification must include any evidence e.g. photographs, should the outcome of the site verification be different to that which is identified by the screening tool.

- (f) If applicable, a site specific EMPr as per Part C of the Generic EMPr for overhead power lines and/or substations gazetted in Government Notice 435¹⁹ published in Government Gazette No. 42323 of 22 March 2019;
 - (g) The completed generic EMPr pre-approved template which is Part B – Section 1 of the Generic EMPr for overhead power lines and/or substations, and where applicable Part C, gazetted in Government Notice 435 published in Government Gazette No. 42323 of 22 March 2019, for display on the websites of the proponent and the EAP; and
 - (h) The confirming statement by the various specialists in the format as identified in Appendix B.
11. The *proposed route* must be finalised to become the final *pre-negotiated route*²⁰ and where relevant the final location/s of the substation/s, by taking into consideration comments received during the public participation process and refining the route as relevant.
 12. A final environmental sensitivity report must be prepared by the EAP supported by the specialists, which locates the final pre-negotiated route and/or the substation location on a map which includes the location of any mitigation devices such as bird flight diverters, a record of comments and responses and, where applicable, Part C of the Generic EMPr and the final confirming statements by the various specialists in the format as identified in Appendix B.
 13. All registered I&APs must be notified of the availability of the final environmental sensitivity report for information²¹.
 14. The proponent must submit the relevant registration form contained in Appendix F of this Standard.
 15. The registration form must be accompanied by:
 - (a) The final pre-negotiated route and the signed declaration by the proponent of commitment to implement the Standard (included as Appendix 9 to the registration form);
 - (b) A signed statement from the proponent that initial servitude negotiations have been concluded;
 - (c) The signed declaration that the proponent will comply with the pre-approved Generic EMPr templates and site specific EMPr if relevant; and
 - (d) All supporting documents stipulated in the registration form.
 16. On receiving the relevant information identified in paragraph 15 above, the competent authority must issue a registration number within 30 days of receipt of the information submitted or if the information is incomplete, indicate to the proponent that the submission is incomplete and identify the outstanding information. A register of all registrations must be kept by the competent authority.
 17. Upon receipt of a registration number, the proponent must inform all registered I&APs within 14 days of the registration and the opportunity to appeal.²²
 18. Registration contemplated in paragraph 16 will be valid for a period of 10 years from receipt of the registration number in order for commencement to take place (validity period). If commencement does not take place within the validity period, the process contemplated in Chapter 2 will apply afresh in such instances.

¹⁹ Part C of the Generic EMPr must include, where required, additional site specific impact management outcomes and impact management actions.

²⁰ The pre-negotiated route must be 250m or less in width. The width of the pre-negotiated route must be included in the final environmental sensitivity report.

²¹ The purpose of the notification is not to make the report available for comment, but rather to make it available for information purposes so that I&APs have access to it.

²² Any appeal must be lodged and processed according to the NEMA National Appeal Regulations promulgated in Government Notice 993 published in Government Gazette 38303 of 8 December 2014; and the NEMA National Appeal Amendment Regulations promulgated in Government Notice 205 published in Government Gazette 38559 of 12 March 2015.

19. The proponent must provide written notice to the compliance monitoring unit within the competent authority 14 days prior to the date on which the first of the activities contemplated in the scope of this Standard, including site preparation, will commence in order to facilitate compliance inspections.
20. Proof of registration must be:
- (a) lodged by the proponent with the relevant Local Municipality, as well as the relevant provincial department responsible for the environment, if the national department responsible for the environment is the CA, prior to commencement;
 - (b) made available by the proponent on request by any member of the public or Authority; and
 - (c) made available, where the proponent or owner has a website, on such publicly accessible website.
21. Where change of ownership of a development registered in terms of paragraph 16 occurs during the pre-construction or construction phases of the infrastructure, the registration number is retained by the new owner, however the new owner must submit to the competent authority for re-registration, the declaration by the proponent of commitment to implement the Standard (included as Appendix 9) and the declaration to implement Part B – Section 1 of the Generic EMPr for overhead power lines and/or substations, and where applicable Part C (Appendix 10), within 30 days upon finalisation of such change. There is no requirement for re-registration once the infrastructure has been constructed as the operation of a power line or substation is not an identified activity in terms of the Act.

Appendix C of this Standard contains a process flow diagram of the procedural requirements and route determination and/or substation location process.

CHAPTER 3. GENERAL ENVIRONMENTAL PRINCIPLES

When planning the power line route or locating the substation position, the following principles must be adhered to:

22. There must be no removal of threatened plant species.
23. There must be no impact on Tier 1 plant species²³ identified through the screening process and site verification process.
24. Clear-cutting during construction must be kept to a maximum of 8 m.
25. Wetlands must be avoided or, where wetland crossing is unavoidable, the power line should be routed over the narrowest part of the wetland. For the most part, wetlands and rivers can be traversed by the power line with little to no impact by placing the pylons outside of the wetland.
26. Avoid all known Blue Swallow breeding habitat by a 2.5 km buffer. Should the full extent of the buffering not be practically possible, a thorough investigation must be conducted by a suitably experienced avifaunal specialist with experience of Blue Swallows to identify any potential nesting holes, which must then be appropriately buffered, in consultation with Ezemvelo KwaZulu-Natal Wildlife and BirdLife South Africa to prevent destruction of the nest holes.
27. Avoid Cape Vulture and White-backed Vulture breeding colonies by a 5 km buffer. In addition, it would require management of the potential impacts on the breeding birds once construction commences,

²³ A tier 1 plant species means “Habitat for species that are endemic to South Africa, where all the known occurrences of that species are within an area of 10 km² are considered Critical Habitat[1], as all remaining habitat is irreplaceable[2]. Typically these include species that qualify under Critically Endangered (CR), Endangered (EN), or Vulnerable (VU)[3] D criteria of the IUCN or species listed as Critically/ Extremely[4] Rare under South Africa’s National Red List Criteria. For each species reliant in a Critical Habitat, all remaining suitable habitat has been manually mapped at a fine scale

which would necessitate the involvement of the avifaunal specialist and the environmental control officer (ECO).

28. Avoid Lappet-faced Vulture and Bearded Vulture restaurants by a 5 km buffer. Should the full extent of the buffering at vulture restaurants not be practically possible, the vulture restaurant should be relocated in consultation with the owner of the restaurant.
29. The power line alignment or substation footing shall not be located within 500 m of the edge of waterbodies found to be suitable for Greater Flamingo, Black Stork, Blue Crane, Great White Pelican, Lesser Flamingo and African Marsh-harrier.
30. The power line alignment or substation shall not be located within 1 km of major²⁴ piggeries and poultry farms.

CHAPTER 4. COMPLIANCE – AUTHORITY INSPECTIONS

31. The proponent must provide the competent authority and any authorised official, including duly designated Environmental Management Inspectors, with access to the facility where the activity included under this Standard is undertaken, for the purposes of monitoring compliance with the Standard.

CHAPTER 5. OFFENCES

32. Failure to comply with the requirements of the Standard constitutes an offence in terms of section 49A of NEMA.

CHAPTER 6. CONTACT DETAILS

The information relating to the location of the EGI Corridors contained in the Standard can also be obtained from the Head Office of the Department of Forestry, Fisheries and the Environment, at the contact details provided below:

CONTACT PERSON/S

Directorate Spatial information Management

Ms Marlanie Moodley or Ms Lisa Pretorius

CONTACT DETAILS

- Screening@dfffe.gov.za
- Direct Line +27 12 399 8916/9301
- Call Centre Number: +27 86 111 2468

CHAPTER 7. REFERENCES

Parties using the Standard shall also consider, *inter alia*, the most recent edition of the documents listed hereunder:

Normative

²⁴ A major facility is a facility as described in Listing Notice 1, Activity 4 and 5, of the EIA Regulations.

- The National Environmental Management Act, 1998 (Act No. 107 of 1998);
- The National Environmental Management: Biodiversity Act, 2004 (Act No. 10 of 2004) (NEM: BA);
- The National Environmental Management: Protected Areas Act, 2003 (Act No. 59 of 2003) (NEM:PAA);
- The National Water Act, 1998 (Act No. 36 of 1998);
- Conservation of Agricultural Resources Act, 1983 (Act No. 43 of 1983) and relevant regulations;
- National Forest Act, 1998 (Act No. 84 of 1998) and the Notice Of Protected Tree Species under the National Forest Act (Government Notice No. 817 published in Government Gazette No. 30253, of the 7 September 2007); and
- Fertilizers, Farm Feeds, Agricultural Remedies and Stock Remedies Act, 1947 (Act No. 36 of 1947).

Informative

- NEM: BA GNR 1002 of 2011 – National list of ecosystem that are threatened and in need of protection.
- NEM: BA GNR 255 of 2015 – Threatened or Protected Species Regulations.
- NEM: BA: GNR 598 of 2014 – Alien and Invasive Species Regulations.
- National Biodiversity Strategy and Action Plan (2005).
- National Biodiversity Framework (2008).
- National Protected Area Expansion Strategy (2008).
- National Biodiversity Assessment (2011).
- Spatial Planning and Land Use Management Act, 2013 (Act No. 16 of 2013).
- Heritage Western Cape Short Guide to and Policy Statement on Grading issued in 2012²⁵;
- South African Heritage Resources Agency (SAHRA) Minimum Standards for Archaeological and Palaeontological Impact Assessments issued in 2007²⁶.
- SANS 10280-1:2013 Overhead power lines for conditions prevailing in South Africa. Part 1: Safety.
- Eskom Specifications:
 - Land and Biodiversity Policy, 32-736.
 - Transmission Environmental Policy, TPL41-435, June 2010.
 - Herbicide Management Policy, ESKPBAAD4, June 2005.
 - Land and Biodiversity Standard, 32-815, May 2016.
 - Wildlife Interaction and Management Standard, 32-829, December 2016.
 - Transmission servitude gates Standard, TGL41-338, November 2009.
 - Standard for bush clearance and maintenance within overhead power line servitude, ESKASABG3, May 2003.
 - Standard for the Safe use of pesticides and herbicides, ESKASAALO, June 2005.
 - Guideline on the electrical coordination of pipelines and power lines, 240-66418968, April 2015.
 - Erosion Guideline, TGL41-337, November 2009.
 - Transmission vegetation management guideline, TGL41-334, November 2009.
 - Bird nesting guidelines, TGL41-333, November 2009.
 - Transmission Bird collision prevention guideline, TGL41-335, November 2009.
 - Transmission Bird perch guideline, TGL41-332, November 2009.
 - Proactive bird mitigation in distribution, 240-115756171.
 - Specification – Transmission line towers and line construction, TRMSCAAC1, March 2001.
 - Contractor Specification for Vegetation Management, 240-52456757, February 2013.
 - Vegetation Management on Eskom Land, Servitudes, Rights of Way, 240-70172585, January 2019 (updated every 4 years).
 - Environmental Procedure for vegetation clearance and maintenance within overhead power line servitudes and on Eskom owned land, 32-247, September 2007.

²⁵https://www.westerncape.gov.za/other/2012/9/grading_guide_&_policy_version_5_app_30_may_2012.pdf

²⁶ <http://www.sahra.org.za/sahris/sites/default/files/website/articledocs/ASG2-2%20SAHRA%20A%26PIAs%20MIN%20STDS%20Ph1-2%2016May07.pdf>

APPENDIX A – ENVIRONMENTAL SPECIFICATIONS

Appendix A includes specifications per environmental theme that need to be carried out to verify the environmental sensitivity of the site and undertake the walkthrough to guide the power line routing and to identify the *final pre-negotiated route as well as identify the location of a substation where relevant*.

A.1. Terrestrial Ecology

1. The Terrestrial Ecology Specialist must:
 - a) Use the **most recently obtainable and available information** (spatial and otherwise) to verify, on a desktop level, the environmental sensitivity of the power line routing and/or substation location. This includes, *inter alia*, most recent versions of the provincial or municipal conservation plans.
 - b) Identify ecosystem types and faunal species that are prone to impacts resulting from power lines and/or substations within the proposed route.
 - c) Verify with a walkthrough, the presence and status of the ecosystem types and species.
 - d) Avoid threatened ecosystem types (CR, EN and VU) or threatened or rare/range restricted species in the final routing and/or substation location if relevant.

A.2. Bats

2. Avoid bat roosts that are known and/or have been identified within a 500 m buffer of the proposed alignment.

A.3. Aquatic Ecology

3. Engage with the department responsible for water affairs to discuss the requirements of a General Authorisation or Water Use Licence.
4. The outcomes of the engagement process contemplated in subparagraph 3 of Paragraph A.3, where required, must be documented in the final environmental sensitivity report, including any restrictions or design requirements.
5. Identify freshwater features that are prone to impacts resulting from the construction of power lines within the proposed route.
6. Avoid the freshwater features in the final routing.

A.4. Estuaries

7. Pylons shall not be placed within the estuarine functional zone²⁷ or within its associated inflowing coastal wetlands and rivers.
8. Estuarine vegetation and associated coastal freshwater riparian vegetation flowing into and/or associated with estuaries shall not be cleared.

A.5. Avifauna

9. During the planning phase:
 - a) A 2 km buffer either side of the centre line of the proposed route of the power line alignment falling within the *preliminary corridor* must be drawn for verification of avifaunal sensitivity.
 - b) The Avifauna specialist must:

²⁷ In South Africa the estuary functional zone is generally defined by the +5 m topographical contour (as indicative of 5 m above mean sea level) and includes all the estuarine open water area; estuarine habitats (sand and mudflats, rock and plant communities) and adjacent floodplain area whether developed or undeveloped. It therefore encompasses not only the estuary water-body but also all the habitats that support physical and biological processes that characterise an estuarine system.

- i. Use the **most recently obtainable and available information** (spatial and otherwise) as well as the screening tool, professional knowledge of the EAP and the avifauna specialist to determine, on a desktop level, the habitat sensitivity for avifaunal species along the power line route and/or substation location. BirdLife South Africa, WWF, the Endangered Wildlife Trust and VULPRO, must be contacted for their input.
- ii. The power line bird mortality incident database of the Endangered Wildlife Trust must be consulted to determine which of the species occurring in the broader study area are typically impacted upon by power lines (EWT unpublished data).
- iii. Establish habitat and migratory routes and likely flight paths²⁸ based on the most recently obtainable and available desktop data and site verification.
- iv. The conservation status of all avifaunal species recorded by the most recent iteration of the SABAP in the broader study area must be determined as per the most recent iteration of the list of threatened species and the IUCN Red Data List of Birds.
- v. Based on the information collected on birds typically impacted upon by power lines, identify the presence of threatened species which include, as a minimum, Cranes, Flamingos, Vultures, Kori Bustards, and Pelicans.
- vi. Where high risk areas are identified these areas must be confirmed with EWT by using their risk assessment tool²⁹.
- vii. Where the risk assessment tool identifies that mitigation measures can be applied, apply these mitigation measures in consultation with EWT, BirdLife South Africa and the local conservation agency.
- viii. Where no acceptable mitigation measures can be applied, re-routing options or engineering solution, for example routing under the risk area identified or increasing the height of the power line in order to avoid potential collision risk areas, must be applied. Where engineering options are considered these must be discussed with EWT, BirdLife South Africa and the local conservation agency.

A.6. Agriculture

10. The placement of pylons must be avoided in the following areas:
 - (a) Land capability evaluation values 11 – 15.
 - (b) Demarcated high value agricultural areas with a priority rating of A and/or B.
11. Where pylons are located in the following areas, the placement must be undertaken in manner in which the impact on these areas are minimised:
 - (a) Land capability evaluation values 8 – 10.
 - (b) Irrigated land.
 - (c) Horticulture and viticulture.
 - (d) Demarcated high value agricultural areas with a priority rating of C and/or D.
12. Where avoidance of the areas specified in subparagraph 10 of Paragraph A.6 is not possible, the areas disturbed during construction must be returned to the pre-disturbance land capability within two years of the construction.
13. All reasonable measures must be taken through micro-siting of the proposed development to minimize fragmentation and disturbance of agricultural activities.
14. Self-supporting lattice or monopole structures are to be used in crop fields, orchards and vineyards.

A.7. Visual

15. Sensitive receptors - including, but not limited to human receptors such as residents, commuters, visitors and tourists, as well as sensitive scenic routes such as wilderness zones³⁰ must be identified. A visual sensitivity map must be compiled to inform the location of the proposed route of the power line.

²⁸ Likely flight paths being areas between breeding sites, roosts, and foraging areas of species at risk

²⁹ Screening.environment.gov.za

³⁰ Wilderness zones are defined as areas of pristine wilderness that do not have any anthropogenic impacts including visual impacts.

16. The precautionary principle must be followed, whereby negotiations must be undertaken with the sensitive human receptors.
17. If the negotiations stipulated in subparagraph 16 of Paragraph A.7 are unsuccessful, the power line must avoid sensitive human receptors and sensitive scenic routes.

A.8. Heritage Resources

18. Where required, a heritage impact assessment (HIA) will be undertaken in compliance with Section 38(1) to 38(4) of the National Heritage Resources Act, 1999 (Act No. 25 of 1999) as well as any Minimum Standards or Guidelines published in relation to Section 38(3)³¹.
19. The HIA must be submitted to the South African Heritage Resources Agency and applicable Provincial Heritage Authorities for decision making procedures.
20. The applicable recommendations or requirements from the South African Heritage Resources Agency and applicable Provincial Heritage Authorities must be documented in the final environmental sensitivity report.

A.9. Civil Aviation

21. Engage with Civil Aviation Authority to identify potential hazards and obstacles to civil aviation installations and conditions as described in the South African Civil Aviation Regulations of 2011.
22. The outcomes of the engagement process must be documented in the final environmental sensitivity report, including any restrictions or design requirements.

A.10. Defence

23. Engage with the defence authorities in the event of the power line being located within:
 - (a) 1 km of forward airfields, high sites, operational military bases, military training areas, shooting ranges, border posts, all other Department of defence features (including naval bases, housing, offices, workshops);
 - (b) 8 km from air force bases;
 - (c) 10 km from ammunition depots; or
 - (d) 56 km from bombing ranges.
24. The outcomes of the engagement process, where required, must be documented in the final environmental sensitivity report, including any restrictions or design requirements.

³¹ The SG 2.2 SAHRA APM Guidelines: Minimum Standards for the Archaeological & Palaeontological Components of Impact Assessment Reports can be accessed on the following website:
<https://www.sahra.org.za/publications/gazettes/>

APPENDIX B – FORMAT OF ENVIRONMENTAL SPECIALIST CONFIRMING STATEMENTS

Appendix B provides the formats of the confirming statements to be provided by the specialist(s) or EAP per theme. The overall aim of the confirming statement is to:

- Confirm that the environmental sensitivity is low or medium as per the sensitivity identified by the screening tool;
- provide a brief elaboration on how the mitigation hierarchy was implemented for the theme;
- state whether identified route is considered to be optimal based on the specialist confirmation of low or medium environmental sensitivity and walkthrough.

In all the confirming statements the following information must be provided:

1. Contact details, relevant qualifications and curriculum vitae of the specialist or EAP, including a description of expertise in preparing the statement;
2. A signed declaration of independence by the specialist or EAP on the form contained in Appendix D or Appendix E of this Standard;

B.1. Terrestrial Ecology

The confirming statement must be prepared by a specialist registered with the South African Council for Natural Scientific Professions (SACNASP) with relevant expertise in terrestrial ecology or similar, and must contain, as a minimum, the following information:

1. A statement on the duration, date and season of the site verification inspection and walkthrough as well as the relevance of the season to the outcome of the confirming statement;
2. Confirmation that the terrestrial ecology (flora and fauna) within the *final pre-negotiated route* and/or the substation location is low based on the most recently available desktop data, site verification inspection and walk through;
3. Identification of terrestrial ecological areas to be avoided within the *final pre-negotiated route*, including buffers and/or the substation location;
4. A terrestrial biodiversity sensitivity map, generated by the screening tool and enhanced by any relevant additional information including the walkthrough, overlaid with the proposed development footprint (i.e. pylon placement and power line route, as well as supporting infrastructure);
5. A description on how the identified environmental sensitivity, relating to terrestrial ecology, has been considered in determining the *final pre-negotiated route* and/or the substation location;
6. A description on how the identified engineering constraints, relating to terrestrial ecology, have been considered in determining the preferred route;
7. A description of the implementation of the mitigation hierarchy in order to determine the *final pre-negotiated route* and/or substation location;
8. How the comments from interested and affected parties on the proposed route and/or substation location were incorporated; and
9. A statement confirming that:
 - a. impact management actions as contained in the pre-approved Generic EMPr template are sufficient for the avoidance, management and mitigation of impacts and risks; or
 - b. where required, specific impact management outcomes and actions are required and have been provided as part of the site specific EMPr.

B.2. Aquatic Ecology

The confirming statement must be prepared by a specialist registered with the SACNASP with relevant expertise in aquatic ecology or similar, and must contain, as a minimum, the following information:

10. A statement on the duration, date and season of the site verification inspection and walkthrough as well as the relevance of the season to the outcome of the confirming statement;
11. Confirmation that the aquatic ecology (flora and fauna) and existing environmental impacts within the *final pre-negotiated route* and/or substation location is low, based on the most recently available desktop data, site verification inspection and walk through;
12. Identification of aquatic ecological areas to be avoided within the *preliminary corridor*, including buffers;
13. An aquatic biodiversity sensitivity map, generated by the screening tool and enhanced by any relevant additional information, overlaid with the proposed development footprint (i.e. pylon placement and power line route, as well as supporting infrastructure);
14. A description on how the identified environmental sensitivity, relating to aquatic ecology, has been considered in determining the proposed route;
15. A description on how the identified engineering constraints, relating to aquatic ecology, have been considered in determining the proposed route;
16. A description of the implementation of the mitigation hierarchy in order to determine the proposed route and/or substation location;
17. How the comments from interested and affected parties on the proposed route and/or substation location were incorporated; and
18. A statement confirming that:
 - a. impact management actions as contained in the pre-approved Generic EMPr template are sufficient for the avoidance, management and mitigation of impacts and risks; or
 - b. where required, specific impact management outcomes and actions are required and have been provided as part of the site specific EMPr;

B.3. Estuaries

The confirming statement is only required if the development is proposed within 5 km of an estuary, and must be prepared by an EAP, or a specialist with relevant expertise in aquatic and/or terrestrial ecology, and must contain, as a minimum, the following information:

19. A description of the affected environment in relation to the presence of estuaries within the *preliminary corridor* and their existing condition, based on available desktop information;
20. Identification of the estuary functional zone to be avoided within the *preliminary corridor*, including buffers that are delineated from the channel margin;
21. A map identifying the estuary and buffer if relevant overlaid with the proposed development footprint (i.e. pylon placement and power line route, as well as supporting infrastructure) based on most recently obtainable and available desktop data, such as the information on the screening tool;
22. A description on how the identified environmental sensitivity, as it pertains to estuaries, has been considered in determining the proposed route;
23. A description on how the identified engineering constraints, as it pertains to estuaries, have been considered in determining the proposed route;
24. A description of the implementation of the mitigation hierarchy in order to determine the *final pre-negotiated route* and/or substation location;
25. How the inputs made by I&APs were considered when determining *the final pre-negotiated route* and/or substation location; and
26. A statement confirming that:
 - a. impact management actions as contained in the pre-approved Generic EMPr template are sufficient for the avoidance, management and mitigation of impacts and risks; or
 - b. where required, specific impact management outcomes and actions are required and have been provided as part of the site specific EMPr;

B.4. Avifauna

The confirming statement must be prepared by an avifaunal specialist registered with the SACNASP, and must contain, as a minimum, the following information:

27. A statement on the duration, date and season of the site verification inspection and walk through as well as the relevance of the season to the outcome of the confirming statement;
28. A description of the affected environment relating to avifauna within the *preliminary corridor*, based on the most recently available desktop data, site verification inspection and walk through information;
29. Identification of avifaunal sensitive areas to be avoided within the *preliminary corridor*, including buffers;
30. An avifauna sensitivity map overlaid with the proposed development footprint (i.e. pylon placement and power line route, as well as supporting infrastructure);
31. A description on how the identified environmental sensitivity, relating to avifauna, has been considered in determining the proposed route;
32. A description on how the identified engineering constraints, relating to avifauna, have been considered in determining the proposed route;
33. A description of the implementation of the mitigation hierarchy in order to determine the proposed route and/or substation location;
34. How the inputs of I&APs were considered when determining the *final pre-negotiated route* and/or substation location; and
35. A statement confirming that:
 - a. impact management actions as contained in the pre-approved Generic EMPr template are sufficient for the avoidance, management and mitigation of impacts and risks; or
 - b. where required specific impact management outcomes and actions are required and have been provided as part of the site specific EMPr;

B.5. Agriculture

The confirming statement must be prepared by a soil scientist or agricultural specialist registered with the SACNASP, and must contain, as a minimum, the following information:

36. The duration, date and season of the site verification inspection and walk through as well as the relevance of the season to the outcome of the confirming statement;
37. Confirmation that the affected environment within the *preliminary corridor*, as it pertains to agricultural resources is low to medium, based on desktop information, site verification and walk through information;
38. Identification of agricultural resource areas to be avoided within the *preliminary corridor*, including buffers;
39. An agricultural resources sensitivity map generated by the screening tool and enhanced by any relevant additional information, overlaid with the (i.e. pylon placement and power line route, as well as supporting infrastructure);
40. A description on how the identified environmental sensitivity, as it pertains to agricultural resources, has been considered in determining the proposed route;
41. A description on how the identified engineering constraints, as it pertains to agricultural resources, have been considered in determining the proposed route;
42. A description of the implementation of the mitigation hierarchy in order to determine the proposed route and/or substation location; and confirmation that all reasonable measures have been considered in the micro-siting of the development to minimise fragmentation and disturbance of agricultural activities;
43. How the inputs of I&APs were considered when determining the *final pre-negotiated route* and/or substation location; and
44. A statement confirming that:
 - a. impact management actions as contained in the pre-approved Generic EMPr template are sufficient for the avoidance, management and mitigation of impacts and risks; or
 - b. where required specific impact management outcomes and actions are required and have been provided as part of the site specific EMPr.

B.6. Visual

The confirming statement must be prepared by a visual specialist. In the context of this Standard, a visual specialist is a person that has relevant academic qualifications and expertise in the domain of visual impact assessments. The confirming statement must contain, as a minimum, the following information:

45. A description of the affected environment as it pertains to visual aspects, including the identification of possible sensitive human visual receptors and sensitive scenic routes.
46. A description of the findings of the engagement with the sensitive visual receptors;
47. A description of the implementation of the mitigation hierarchy in order to determine the *preferred route and/or* substation location;
48. Statement on whether or not the proposed development will have any residual risk on the sensitive visual receptors, and whether such a risk is acceptable or not;
49. How the inputs of I&APs were considered when determining the *final pre-negotiated route and/or* substation location, and
50. A statement confirming that:
 - a. impact management actions as contained in the pre-approved Generic EMPr template are sufficient for the avoidance, management and mitigation of impacts and risks; or
 - b. where required, specific impact management outcomes and actions are required and have been provided as part of the site specific EMPr.

B.7. Heritage Resources

The confirming statement must be prepared by suitably qualified specialist in the field of heritage resources (archaeology, marine and built environment) and palaeontology, and must contain, as a minimum, the following information:

51. A description of the affected environment in terms of heritage resources and palaeontology, and an indication of existing heritage and palaeontological impacts within the *preliminary corridor* based on the site verification inspection and walk through.
52. Identification of heritage resources and palaeontological areas to be avoided within the *preliminary corridor*, including buffers;
53. A heritage sensitivity map overlaid with the proposed development footprint (i.e. pylon placement and power line route, as well as supporting infrastructure) based on most recently obtainable and available desktop data, such as the information on the screening tool and the South African Heritage Resources Information System, site verification inspection and walk through (where necessary);
54. Where required, a written comment or letter of no objection from the South African Heritage Resources Agency and/or applicable provincial heritage authority confirming that there is no unacceptable impact on heritage resources and palaeontology;
55. Confirmation that any recommendations as required by the South African Heritage Resources Agency and/or applicable provincial heritage authority have been incorporated and considered;
56. A description on how the identified environmental sensitivity pertaining to heritage resources and palaeontology has been considered in determining the proposed route;
57. A description of the implementation of the mitigation hierarchy in order to determine the proposed route and/or substation location;
58. How the inputs of I&APs were considered when determining the *final pre-negotiated route and/or* substation location; and
59. A statement confirming that:
 - a. impact management actions as contained in the pre-approved Generic EMPr template are sufficient for the avoidance, management and mitigation of impacts and risks; or
 - b. where required, specific impact management outcomes and actions are required and have been provided as part of the site specific EMPr.

B.9. Civil Aviation

The confirming statement must be prepared by an EAP and must contain, as a minimum, the following information:

60. A signed declaration of independence by the EAP on a form prescribed by the competent authority as contained in Appendix E of this Standard;

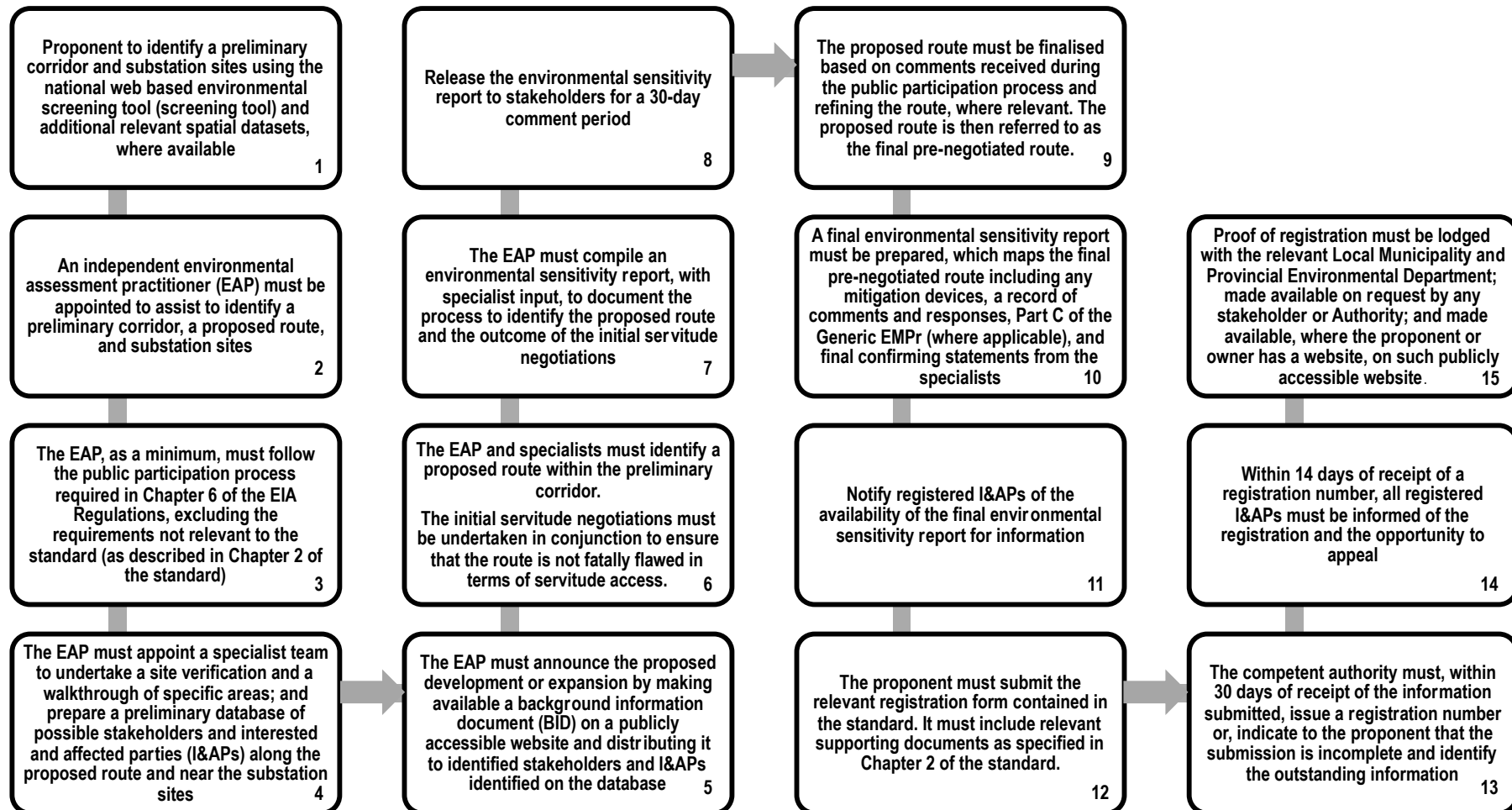
61. Confirmation that the affected environment within the *preliminary corridor* is low or medium, as it pertains to aspects of civil aviation based on desk top information, the site verification inspection and the walk through;
62. Identification of civil aviation areas to be avoided within the proposed route, including buffers;
63. A civil aviation sensitivity map overlaid with the proposed development footprint (i.e. pylon placement and power line route, as well as supporting infrastructure) based on most recently obtainable and available desktop data, such as the information on the screening tool;
64. Where required, a written comment from the South African Civil Aviation Authority (SACAA), which may require input from the Obstacle Evaluation Committee (OEC), confirming that there is no unacceptable impact on civil aviation installations;
65. Confirmation that any restrictions or design requirements as required by the SACAA and/or OEC have been incorporated and considered;
66. A description on how the identified environmental sensitivity, as it pertains to civil aviation, has been considered in determining the proposed route;
67. A description on how the identified engineering constraints, as it pertains to civil aviation, have been considered in determining the proposed route;
68. A description of the implementation of the mitigation hierarchy in order to determine the proposed route and/or substation location;
69. How the inputs of I&APs were considered when determining the *final pre-negotiated route* and/or substation location; and
70. A statement confirming that:
 - a. impact management actions as contained in the pre-approved Generic EMPr template are sufficient for the avoidance, management and mitigation of impacts and risks; or
 - b. where required, specific impact management outcomes and actions are required and have been provided as part of the site specific EMPr;

B.10. Defence

The confirming statement must be prepared by an EAP, and must contain, as a minimum, the following information:

71. A signed declaration of independence by the EAP on a form prescribed by the competent authority as contained in Appendix E of this Standard;
72. Confirmation that the affected environment within the *preliminary corridor* is low or medium, as it pertains to aspects of Defence;
73. Identification of defence areas to be avoided within the *preliminary corridor*, including buffers;
74. A defence sensitivity map overlaid with the proposed development footprint (i.e. pylon placement and power line route, as well as supporting infrastructure) based on most recently obtainable and available desktop data, such as the information on the screening tool;
75. Where required, a written comment from the defence authority confirming that there is no unacceptable impact on military areas of interest;
76. Confirmation that any restrictions or design requirements as required by the defence authority have been incorporated and considered;
77. A description on how the identified environmental sensitivity, as it pertains to defence, has been considered in determining the proposed route;
78. A description on how the identified engineering constraints, as it pertains to defence, have been considered in determining the proposed route;
79. A description of the implementation of the mitigation hierarchy in order to determine the proposed route and/or substation location;
80. How the inputs of I&APs were considered when determining the *final pre-negotiated route* and/or substation location and
81. A statement confirming that:
 - a. impact management actions as contained in the pre-approved Generic EMPr template are sufficient for the avoidance, management and mitigation of impacts and risks; or
 - b. where required, specific impact management outcomes and actions are required and have been provided as part of the site specific EMPr.

APPENDIX C - GENERIC PROCESS FLOW DIAGRAM OF THE PROCEDURAL REQUIREMENTS



APPENDIX D - SPECIALIST DECLARATION TEMPLATE

Specialist Company Name:			
Specialist name:			
Specialist Qualifications:			
Professional affiliation/registration ³² :			
Physical address:			
Postal address:			
Postal code:		Cell:	
Telephone:		Fax:	
E-mail:			

DECLARATION BY THE SPECIALIST

I, _____, declare that –

- I act as the independent specialist in this Standard registration process;
- I have performed the work relating to the specialist assessment and/or route or substation location confirmation in an objective manner;
- I declare that there are no circumstances that may compromise my objectivity in performing such work;
- I have expertise in conducting the specialist input and confirming statement relevant to this request for registration, including knowledge of the Act, Regulations and any guidelines that have relevance to the proposed activity;
- I will comply with the Act, and all other applicable legislation;
- I have no, and will not engage in, conflicting interests in the undertaking of the activity;
- I undertake to disclose to the proponent all material information in my possession that reasonably has or may have the potential of influencing compliance with the Standards registration process; and
- all the particulars furnished by me in this form are true and correct.

Signature of the Specialist:

Name of Company:

Date:

³² A copy of the most recent registration certificate must be appended to this declaration.

APPENDIX E - ENVIRONMENTAL ASSESSMENT PRACTITIONER DECLARATION TEMPLATE

EAP Company Name:			
EAP name:			
EAP Qualifications:			
Professional affiliation/registration:			
Physical address:			
Postal address:			
Postal code:		Cell:	
Telephone:		Fax:	
E-mail:			

DECLARATION BY THE EAP

I, _____, declare that –

- I act as the independent environmental assessment practitioner in this Standard registration process;
- I have expertise in conducting environmental impact assessments, including knowledge of the Act, Regulations and any guidelines that have relevance to the proposed activity;
- I have complied with the Act, Regulations and all other applicable legislation;
- I have performed the work relating to the Standard registration process in an objective manner;
- I have taken into account, to the extent possible, the matters listed in regulation 13 of the Environmental Impact Assessment Regulations, 2014 (as amended) when preparing the various reports and submitting the request for registration;
- I have disclosed to the Proponent all material information in my possession that reasonably has or may have the potential of influencing the Standard registration process; and the objectivity of any report, plan or document prepared by myself for submission as part of this Standard registration process, other than information that is protected by law, in which case it was indicated that such information exists; and
- I have performed all obligations as expected from an environmental assessment practitioner in terms of the registration process in terms of the Standard.

Disclosure of Vested Interest (delete whichever is not applicable)

I do not have any vested interest (either business, financial, personal or other) in the proposed activity proceeding other than remuneration for work performed in terms of this Standard registration process;

I have a vested interest in the proposed activity proceeding, such vested interest being:

Signature of the Environmental Assessment Practitioner

Name of Company:

Date

UNDERTAKING UNDER OATH/ AFFIRMATION

I, _____, swear under oath / affirm that all the information submitted for the purposes of this registration is true and correct.

Signature of the Environmental Assessment Practitioner

Name of Company

Date

Signature of the Commissioner of Oaths

Date

APPENDIX F – REGISTRATION FORM

Registration form to request registration and intent to comply with the *Standard for the Development and Expansion of Power Lines and Substations within Identified Geographical Areas Revision 2* in terms of the National Environmental Management Act, 1998 (Act No. 107 of 1998), as amended.

FOR OFFICE USE ONLY	
Date of receipt of the registration form	
Registration number	

PROJECT TITLE

--

1. This form must always be used when requesting registration in terms of *the Standard for the Development and Expansion of Power Lines and Substations within Identified Geographical Areas Revision 2*, which allows for the exclusion from the requirement to obtain an environmental authorisation from the competent authority for listed and specified activities identified in the scope of this Standard which are associated with the development of electricity transmission and distribution power lines and substations when developed in areas of low or medium environmental sensitivity within the *Strategic Transmission Corridors*.
2. An electronic copy (in the form of a USB) of the signed registration form must be submitted together with two hard copies (one of which must contain the original signatures of both the proponent and EAP) to the competent authority.
3. All fields must be completed in full. The submission of incomplete information will lead to the registration being returned for inclusion of the missing information.
4. The required information must be typed within the spaces provided in the form. The sizes of the spaces provided are not necessarily indicative of the amount of information to be provided. Spaces are provided in tabular format and will extend automatically when each space is filled with typing. A legible font type and size must be used when completing the form. The font size should not be smaller than 10pt (e.g. Arial 10).
5. Unless protected by law, all information contained in and attached to this registration form, will become public information on receipt by the competent authority other than personal information of landowners which is for competent authority verification only. Upon request during any stage of the registration process, the proponent / EAP must provide any registered interested and affected party with the information contained in and attached to this registration form other than the personal information of landowners.
6. Please note that where the competent authority is the national department responsibly for the environment, this form must be copied to the relevant Provincial Environmental Department(s) for their information.
7. Maps must be produced using the Hartebeesthoek94 WGS84 coordinate system. Spatial data in shape file (.shp) format with associated metadata, packaged as a ZIP file (.zip), must be included in the supporting documentation. This must be provided electronically (in the form of a USB).

Departmental Details (example provided is for the national competent authority):

<p>Postal address: Department of Forestry, Fisheries and the Environment Attention: Chief Director: Integrated Environmental Authorisations Private Bag X447 Pretoria 0001</p> <p>Physical address: Department of Forestry, Fisheries and the Environment Attention: Chief Director: Integrated Environmental Authorisations Environment House 473 Steve Biko Road Arcadia</p> <p>Queries must be directed to the Directorate: Coordination, Strategic Planning and Support at: Email: EIAAdmin@dffe.gov.za</p>
--

COMPETENT AUTHORITY

Identified competent authority to consider the registration form:	
Reason(s) in terms of S24C of NEMA:	

DETAILS OF THE PROPONENT

All notifications regarding the registration will be sent to the proponent using the details provided in this section.

Name of the proponent (Company/ Trading Name):		
Name of contact person for proponent:		
RSA Identity/ Passport Number:		
Responsible position, e.g. Director, CEO, etc.:		
Company Registration Number:		
BBBEE status:		
Physical address:		
Postal address:		
Postal code:	Cell:	
Telephone:	Fax:	
E-mail:		

The originally signed declaration by the proponent confirming commitment to comply with the *Standard for the Development and Expansion of Power Lines and Substation within Identified Geographical Areas Revision 2* in terms of the National Environmental Management Act, 1998 (Act No. 107 of 1998), must be submitted as Appendix 9 of the registration form.

Where a change of ownership of a development registered in terms of paragraph 16 occurs during the pre-construction or construction phases of the infrastructure, the registration number is retained by the new owner, however the new owner must submit the declaration by the proponent of commitment to implement

the Standard (included as Appendix 9) and the declaration to implement Part B – Section 1 of the Generic EMPr for overhead power lines and substations, and where applicable Part C, within 30 days upon finalisation of such change. There is no requirement for re-registration once the infrastructure has been constructed as the operation of a power line and substation are not identified activities in terms of the Act.

LANDOWNER CONTACT DETAILS

Please note that the Department of Forestry, Fisheries and the Environment complies with the Protection of Personal Information Act, 2013 (Act No. 4 of 2013) and the personal information of landowners is for the use of the Department only for verification if necessary of pre-negotiation of the route only.

Name of the landowner:			
Name of contact person for landowner (if other):			
Postal address:			
Postal code:	Cell:		
Telephone:	Fax:		
E-mail:			

Name of Person in control of the land:			
Name of contact person for person in control of the land:			
Postal address:			
Postal code:	Cell:		
Telephone:	Fax:		
E-mail:			

In instances where there is more than one landowner, please attach a list of those landowners with their contact details in Appendix 3 of this registration form.

PROVINCIAL ENVIRONMENTAL AUTHORITY AND LOCAL MUNICIPALITY CONTACT DETAILS

Provincial Environmental Authority:			
Relevant section:			
Postal address:			
Postal code:	Cell:		
Telephone:	Fax:		
E-mail:			
Local Municipality:			
Relevant section:			
Postal address:			
Postal code:	Cell:		
Telephone:	Fax:		
E-mail:			

In instances where there is more than one Provincial Environmental Authority and Local Municipality involved, please attach a list of these Authorities with their contact details in Appendix 4 of this registration form.

ENVIRONMENTAL ASSESSMENT PRACTITIONER (EAP) INFORMATION

Company of Environmental Assessment Practitioner: B-BBEE			
Contribution level (indicate 1 to 8 or non-compliant)		Percentage Procurement recognition	

EAP name:		
EAP Qualifications:		
Professional affiliation/registration:		
Physical address:		
Postal address:		
Postal code:	Cell:	
Telephone:	Fax:	
E-mail:		

The appointed EAP must meet the requirements of regulation 13 of the EIA Regulations, 2014 as amended. The declaration of independence of the EAP and undertaking under oath or affirmation that all the information submitted for the purposes of the registration is true and correct must be submitted and included in Appendix 11. Curriculum Vitae of the EAP and specialists must be included in Appendix 12.

PROJECT INFORMATION AND MAPS

Please provide a **detailed** description of the project:

Please indicate which gazetted Strategic Transmission Corridor the project will take place in:

A copy of the final Screening Tool Report generated on the National Web Based Environmental Screening Tool for the proposed pre-negotiated route and any substation where relevant must be attached as Appendix 1 of the registration form.

A copy of the final environmental sensitivity report as required in the *Standard for the Development and Expansion of Power Lines and Substations within Identified Geographical Areas Revision 2* must be submitted as Appendix 2 of the registration form.

A locality map must be attached to Appendix 6 of the registration form. For linear activities of more than 25 kilometres, a small scale e.g. 1:250 000 can be used. The scale must be indicated on the map. The map must include the following:

- an accurate indication of the project site position;
- location of the gazetted Strategic Transmission Corridor(s);
- road names or numbers of all the major roads as well as the roads that provide access to the site(s)
- a north arrow;
- a legend;
- a scale bar; and
- GPS co-ordinates (Indicate the position of the proposed activity with the latitude and longitude at strategic points along the route of the power line. The co-ordinates should be in degrees and decimal minutes. The minutes should be to at least three decimal places. The projection that must be used in all cases is the WGS-84 spheroid in a national or local projection).

A final pre-negotiated route plan and/or any substation location where relevant must be attached to Appendix 7 of the registration form. Accompanying spatial data must be submitted electronically in shape file format (.shp) files with associated metadata, packaged as a ZIP file (.zip).

The sensitivity map must be attached as Appendix 8 of the registration form. The map must include the following:

- a north arrow;
- a legend;
- a scale bar;
- site sensitivities, including but not limited to vegetation, wetlands, watercourses, heritage sites, critical biodiversity area/s, world heritage site, etc. and it must be overlaid by the study area and proposed electricity grid infrastructure and/or any substation where relevant.

SITE DESCRIPTION

Provide a detailed description of the site involved in the registration.

Province/s	
District Municipality/ies	
Local Municipality/ies	
Ward number/s	
Nearest town/s	
Farm name/s and number/s	
Portion number/s	

Surveyor General 21 digit codes for the route alignment, which can be obtained from the screening report:

1	2	3	4	5																

If there are more than 4, please attach a list with the rest of the codes. Where the 21 digit SGID and farm name are not available, the coordinates of the boundary of the property or properties must be provided in Appendix 5 of this registration form.

LIST OF APPENDICES

		SUBMITTED	
APPENDIX 1	Final screening tool report for the final proposed pre-negotiated route and/or the location of any substation where relevant	YES	NO
APPENDIX 2	Final environmental sensitivity report	YES	NO
APPENDIX 3	List and contact details of land owners	YES	NO
APPENDIX 4	List and contact details of provincial environmental authority and local municipality	YES	NO
APPENDIX 5	List of SGIDs/coordinates of the boundary of the property or properties	YES	NO
APPENDIX 6	Locality map	YES	NO
APPENDIX 7	Final pre-negotiated route plan of the electricity grid infrastructure and/or the location of any relevant substation ³³	YES	NO
APPENDIX 8	Sensitivity map	YES	NO
APPENDIX 9	Declaration of the proponent: commitment to implement the Standard	YES	NO
APPENDIX 10	Declaration of the proponent: commitment to implement the Generic and where relevant the site specific environmental management programme	YES	NO
APPENDIX 11	Declaration of EAP and undertaking under oath or affirmation	YES	NO
APPENDIX 12	Curriculum vitae of the EAP and specialists	YES	NO

³³ Shape files (.shp) and associated metadata, packaged as a ZIP file (.zip), of the final pre-negotiated route plan and/or the location of any relevant substation must be submitted to the competent authority.

APPENDIX 1:

**FINAL SCREENING TOOL REPORT FOR THE FINAL PROPOSED PRE-NEGOTIATED ROUTE
AND/OR THE LOCATION OF ANY SUBSTATION WHERE RELEVANT**

APPENDIX 2:

FINAL ENVIRONMENTAL SENSITIVITY REPORT

APPENDIX 3:

LIST AND CONTACT DETAILS OF LAND OWNERS

APPENDIX 4:

**LIST AND CONTACT DETAILS OF PROVINCIAL ENVIRONMENTAL AUTHORITY
AND LOCAL MUNICIPALITY**

APPENDIX 5:

LIST OF SGIDS / COORDINATES OF THE BOUNDARY OF THE PROPERTY OR PROPERTIES

APPENDIX 6:
LOCALITY MAP

APPENDIX 7:

**FINAL PRE-NEGOTIATED ROUTE PLAN OF THE ELECTRICITY GRID INFRASTRUCTURE
AND/OR LOCATION OF ANY RELEVANT SUBSTATIONS³⁴**

³⁴ The final pre-negotiated route plan and/or location of any relevant substations must be included as a shape file at a scale not more than 1:15000 to identify environmental features

APPENDIX 8:
SENSITIVITY MAP

APPENDIX 9:

DECLARATION OF THE PROPONENT COMMITMENT TO IMPLEMENT THE STANDARD³⁵

I, _____, hereby declare that:

- I am the proponent in this registration;
- I have appointed an Environmental Assessment Practitioner (EAP) to act as the independent EAP for this registration;
- I have taken all reasonable steps to verify whether the EAP and specialist/s appointed are independent and have relevant expertise, including knowledge of the Act, the EIA Regulations and any guidelines that have relevance to the proposed activity;
- I have provided the EAP and specialists with access to all information at my disposal that is relevant to the registration;
- I am responsible for implementing the EMPr;
- I am responsible for the costs incurred in complying with the Standard, including but not limited to –
 - costs incurred in connection with the appointment of the EAP or any person contracted by the EAP;
 - costs incurred in respect of the undertaking of any process required in terms of the Standard; and
 - costs associated with implementing the EMPr;
- I hereby indemnify the Government of the Republic of South Africa, the competent authority and all its officers, agents and employees, from any liability arising out of the content of any registration, any procedure or any action which I as the proponent or the EAP is responsible for in terms of the Standard;
- I will not hold the competent authority responsible for any costs that may be incurred in proceeding with an activity prior to obtaining confirmation of registration or prior to an appeal being decided in terms of the National Appeal Regulations, 2014;
- I have performed all obligations as expected from a proponent in terms of the Standard;
- I have read the completed registration form and supporting documents and hereby confirm that the information provided is, to the best of my knowledge, true and correct;
- All the particulars furnished by me in this form are true and correct;
- I have not commenced with the project as described in paragraph 1.3 of Chapter 1 of this Standard and will not commence until a registration number has been received as contemplated in the *Standard for the Development and expansion of Power Lines and Substations within Identified Geographical Areas Revision 2*; and
- I am fully aware of my responsibilities in terms of the *Standard for the Development and Expansion of Power Lines and Substations within Identified Geographical Areas Revision 2* in terms of the National Environmental Management Act, 1998 (Act No. 107 of 1998) (NEMA) and failure to comply with these requirements may constitute an offence. I am aware of what constitutes an offence in terms of the Standard and that a person convicted of an offence is liable to the penalties as contemplated in section 49B of the Act.

Proponent (Name and Surname) _____

Name of Company (If Applicable) _____

Designation _____

Signature³⁶ _____

Date _____ Place _____

³⁵ This registration form must be signed by the proponent.

³⁶ Only original signatures will be accepted. No scanned, copied or faxed signatures will be accepted. An EAP may not sign on behalf of the proponent.

Commissioner of Oaths _____

Designation _____

Signature _____

Date _____ Place _____

Commissioner of Oaths Stamp

APPENDIX 10:

DECLARATION OF THE PROPONENT COMMITMENT TO IMPLEMENT THE GENERIC AND WHERE RELEVANT THE SITE SPECIFIC ENVIRONMENTAL MANAGEMENT PROGRAMME

I, _____, the proponent, affirm that I will abide by and comply with the prescribed impact management outcomes and impact management actions as stipulated in Part B: Section 1 / Part C [delete what is not applicable] of the Generic Environmental Management Programmes for the Development and Expansion of Overhead Electricity Transmission and Distribution Infrastructure and for the Development and Expansion of Substation (as published under Government Notice No. 435 in Government Gazette No. 42323 of 22 March 2019.).

I declare that I have the understanding that the impact management outcomes and impact management actions are legally binding.

I affirm that I will provide written notice of commencement of construction to the competent authority 14 days prior to the date on which the activity will commence in order to facilitate compliance inspections.

Proponent (Name and Surname) _____

Name of Company (If Applicable) _____

Designation _____

Signature³⁷ _____

Date _____ Place _____

³⁷ An EAP may not sign on behalf of the proponent.

APPENDIX 11:

DECLARATION OF EAP AND UNDERTAKING UNDER OATH OR AFFIRMATION

Declaration of EAP

I, _____, declare that –

- I act as the independent environmental assessment practitioner in the Standard registration process;
- I have expertise in conducting environmental impact assessments, including knowledge of the Act, the *Standard for the Development and Expansion of Power Lines and Substations within Identified Geographical Areas Revision 2*, the Regulations and any guidelines that have relevance to the proposed activity;
- I will comply with the National Environmental Management Act, 1998 (Act No.107 of 1998) the *Standard for the Development and Expansion of Electricity Power Lines and Substations within Identified Geographical Areas Revision 2*, the Regulations and all other applicable legislation;
- I have performed the work relating to the Standard registration process in an objective manner;
- I have taken into account, to the extent possible; the requirements of the *Standard for the Development and Expansion of Power Lines and Substations within Identified Geographical Areas Revision 2*, matters listed in Regulation 13 of the Environmental Impact Assessment (EIA) Regulations, 2014 (as amended) when preparing the Standard registration process; and the reports relating to the Standard registration process;
- I have disclosed to the Proponent all material information in my possession that reasonably has or may have the potential of influencing the Standard registration process; and the objectivity of any report, plan or document to be prepared by myself to support the registration process, unless access to that information is protected by law, in which case, I have indicated that such information exists and will be provided to the competent authority as part of the registration process; and
- I have performed all obligations as expected from an environmental assessment practitioner in terms of the *Standard for the Development and Expansion of Power Lines and Substations within Identified Geographical Areas Revision 2* and the EIA Regulations, 2014 (as amended).

Disclosure of vested Interest (delete whichever is not applicable)

- I do not have any vested interest (either business, financial, personal or other) in the proposed activity proceeding other than remuneration for work performed in terms of the Standard;
- I have a vested interest in the proposed activity proceeding, such vested interest being:

Signature of the Environmental Assessment Practitioner

Name of Company

Date

Undertaking under Oath or Affirmation

I, _____, swear under oath / affirm that all the information submitted or to be submitted for the purposes of this registration is true and correct.

Signature of the Environmental Assessment Practitioner

Name of Company

Date

Signature of the Commissioner of Oaths

Date

APPENDIX 12:
CURRICULUM VITAE OF THE EAP AND SPECIALISTS